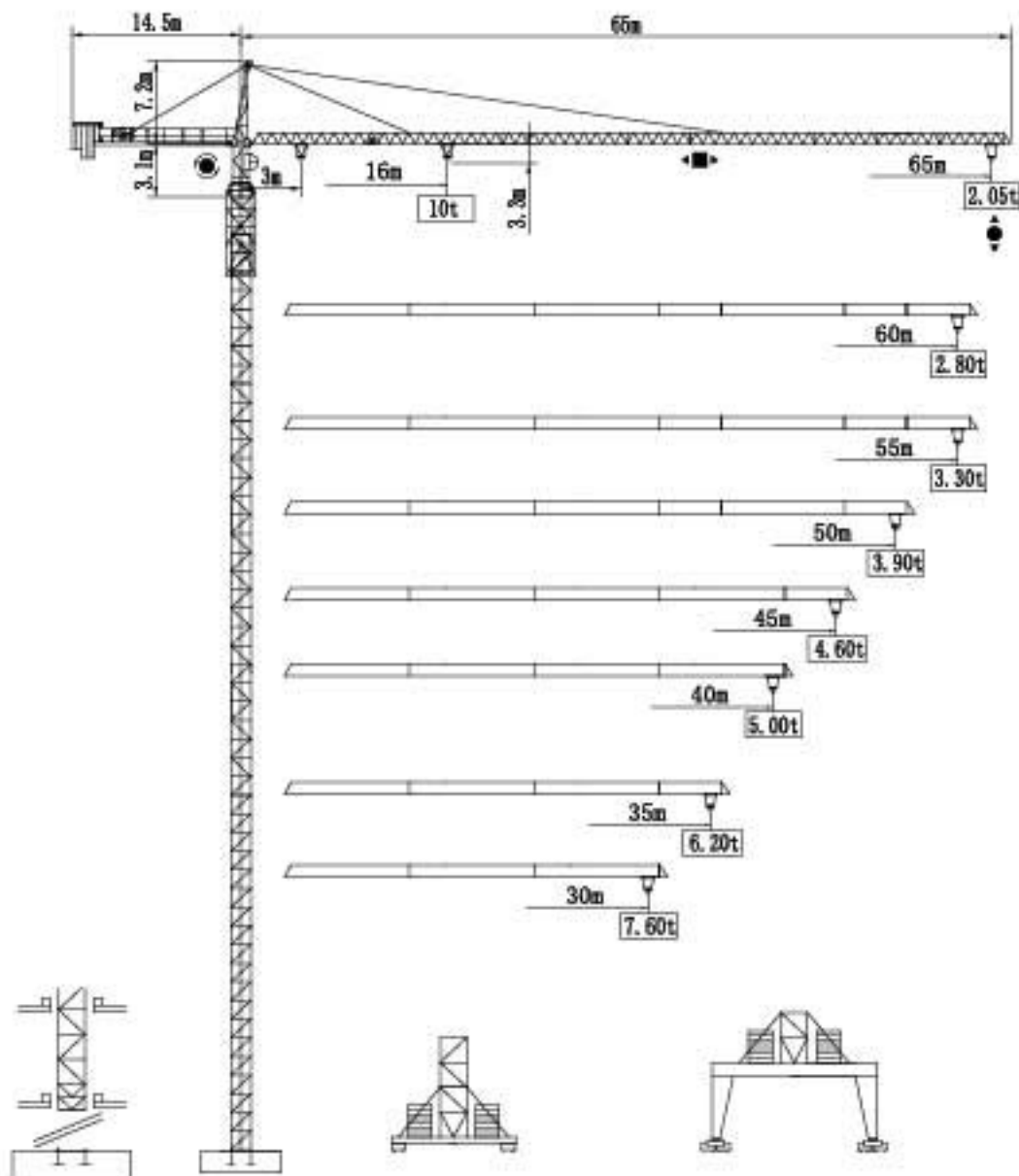
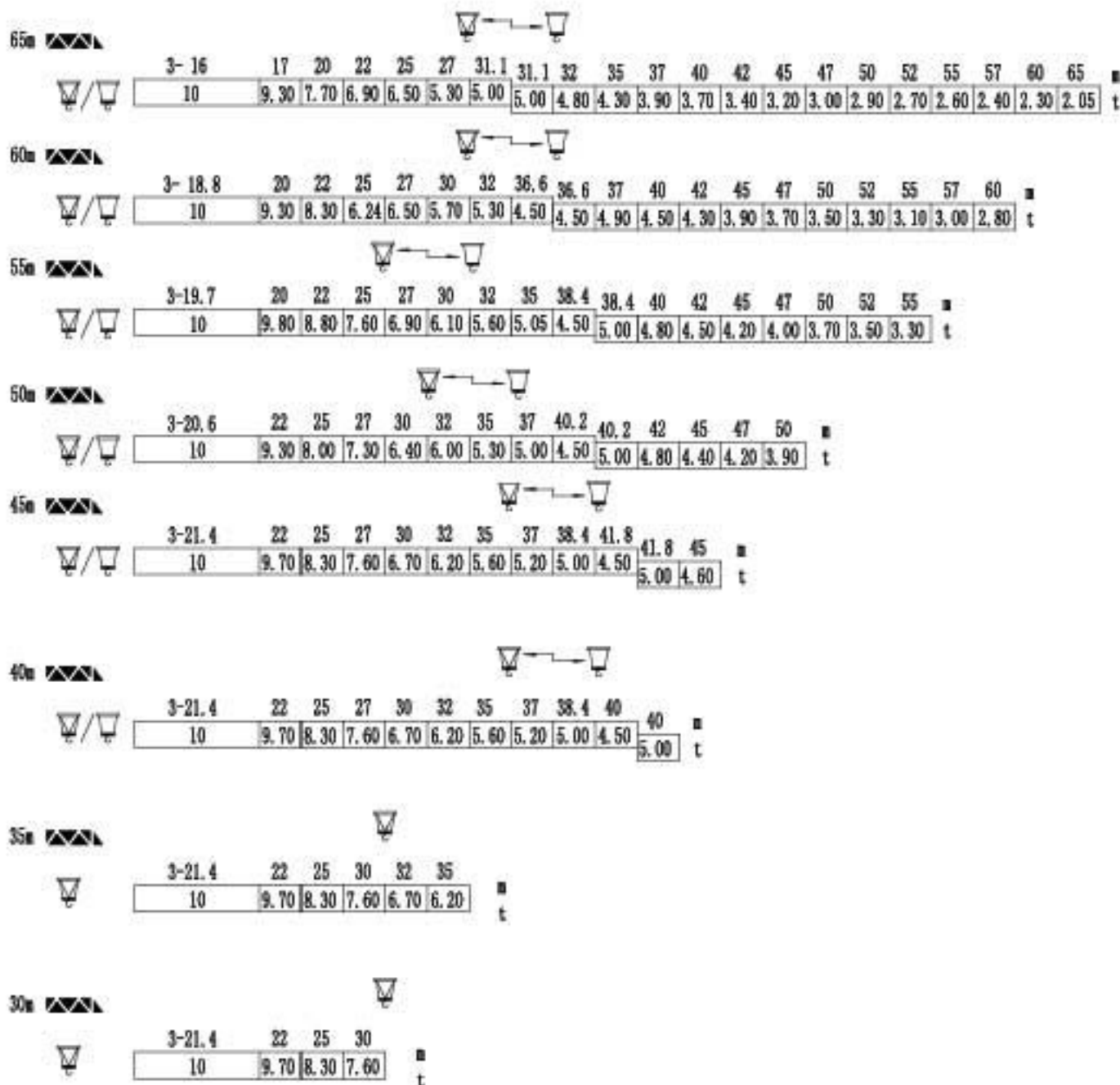


TOWER CRANE



通过 ISO9001 国际质量体系认证  
Our products have been awarded of ISO9001

### 载荷特性 Load diagrams



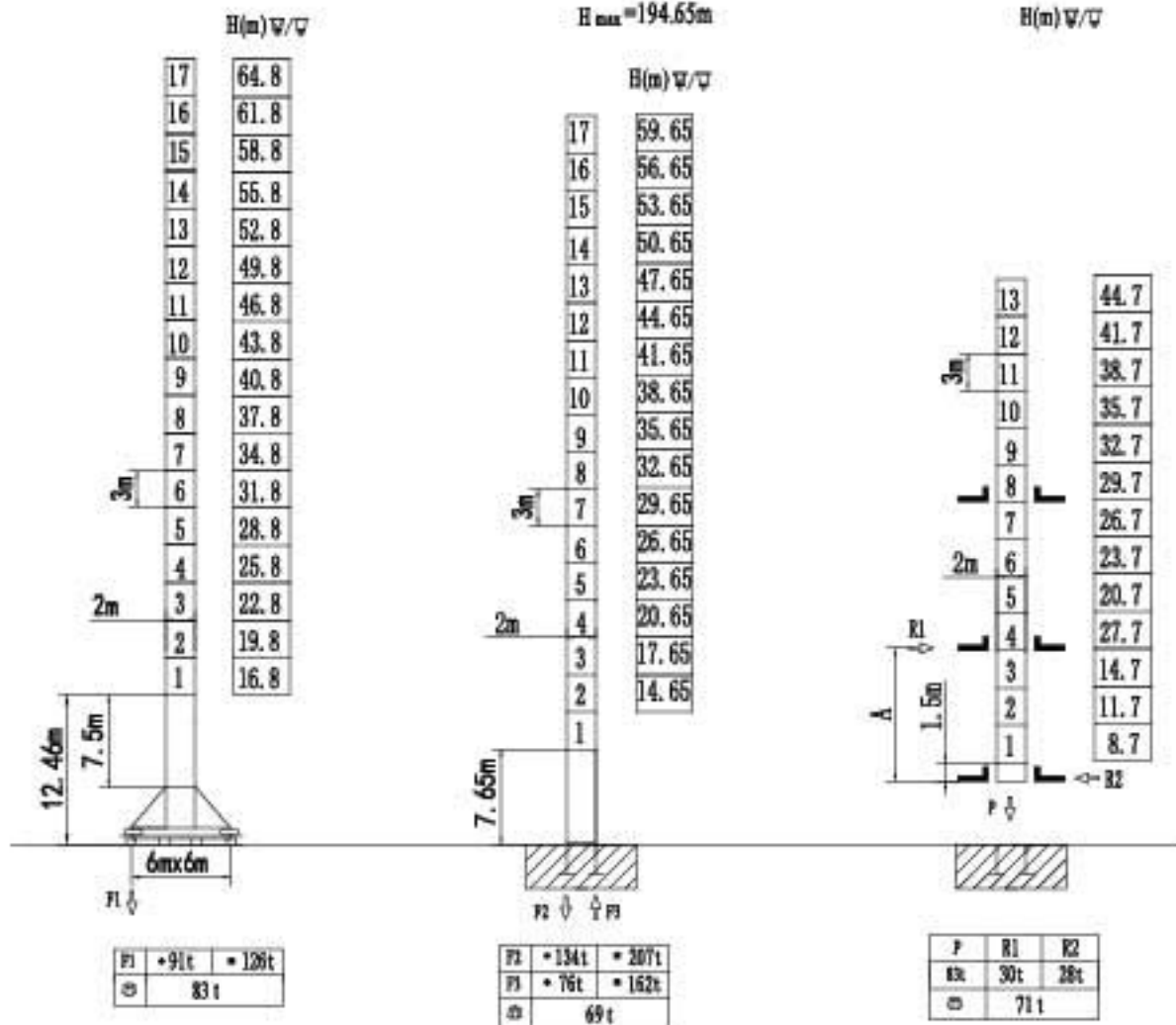
标准小车可使用2/4倍绳率。(使用四倍绳率时,应从二倍率的载荷中减去0.5吨)  
 Standard trolley 2/4 fall.(When using 4x fall subtract 0.5t from the loads.)

### 塔身截面 Mast 2mx2m

#### 行走式 Travelling

#### 固定式 Stationary







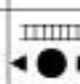
#### 内爬式 Climbing



F 反力 Reactions	• 工作状态 in service	自重 Self-load	不带载荷及配重 最大臂长及标准 高度时的自重	Without load and ballast with longest jib and maximum height
	■ 非工作状态 Out of service			

### 运输 Shipping

序号 No.	塔身 Tower	高度 (m) H(m)	集装箱数量 Container QTY			
			FR	40' GP	40' HQ	20' GP
1	固定式	59.65				
2	行走式	64.8				
3	内爬式	44.7				

机构特性 Mechanisms specification								电机 (kw)
起升 Hoisting		45LVF25 (60QP25HS)	m/min	t	m/min	t	600m	45
			0-45	5	0-22.5	10		
			0-90	2.5	0-45	5		
变幅 Trolleying		95BLX65	0-60 m/min					5.5
回转 Slewing		RCV95	0.6 rpm					95Nm x 2 5.5x2
行走 Travelling								
电源 Mains supply			380V/50HZ 440V/60HZ					
KVA 供电容量 Necessary electric power			90 KVA					

以上参数可按用户要求配置

执行标准 Voluntary Standards: GB/T13752

#### Contract information:

Tel:0086-24-88901098 Fax:0086-24-88095022

Email:info@cn-zcjj.com

Office Address:308 room,Fengjingruige building,  
code 256,Dongbei damalu,Dadong District,Shenyang,  
China

Post Code:110044

Factory Address:The north of Huanggu Industry,  
Shenyang City,Liaoning Province,China.

Website: www.zcjjtowercrane.com

沈阳正创建筑机械有限公司

联系方式:

电话: 024-88901098

传真: 024-88095022

邮箱: info@cn-zcjj.com

地址: 沈阳市大东区东北大马路256号