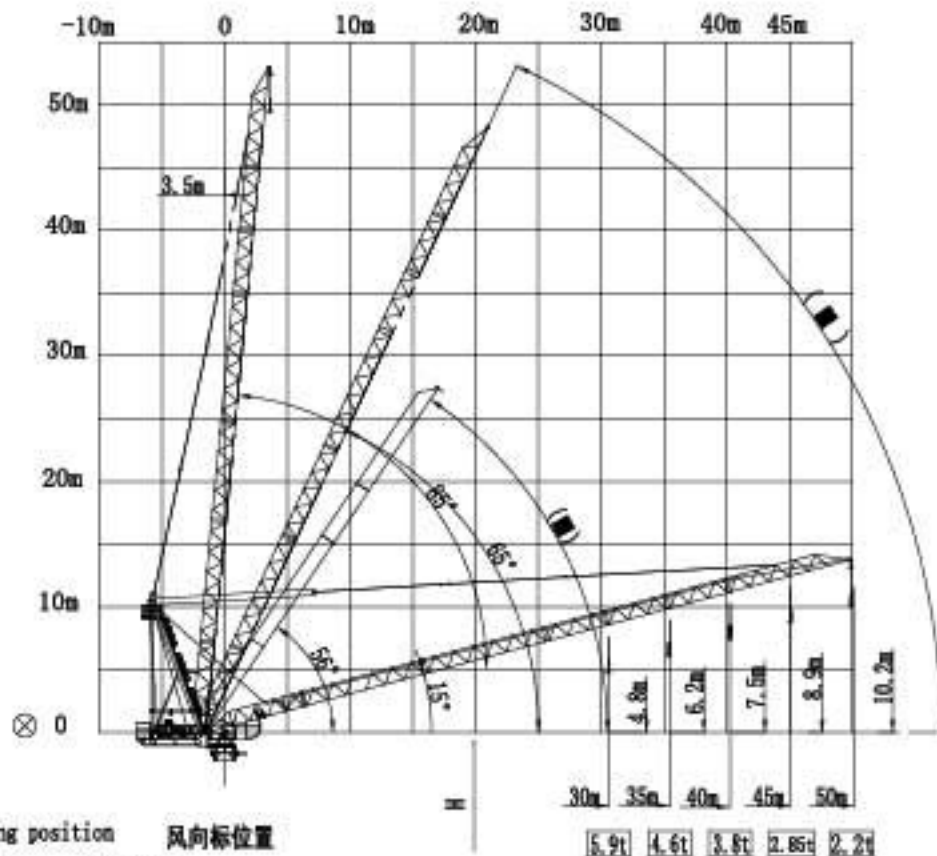
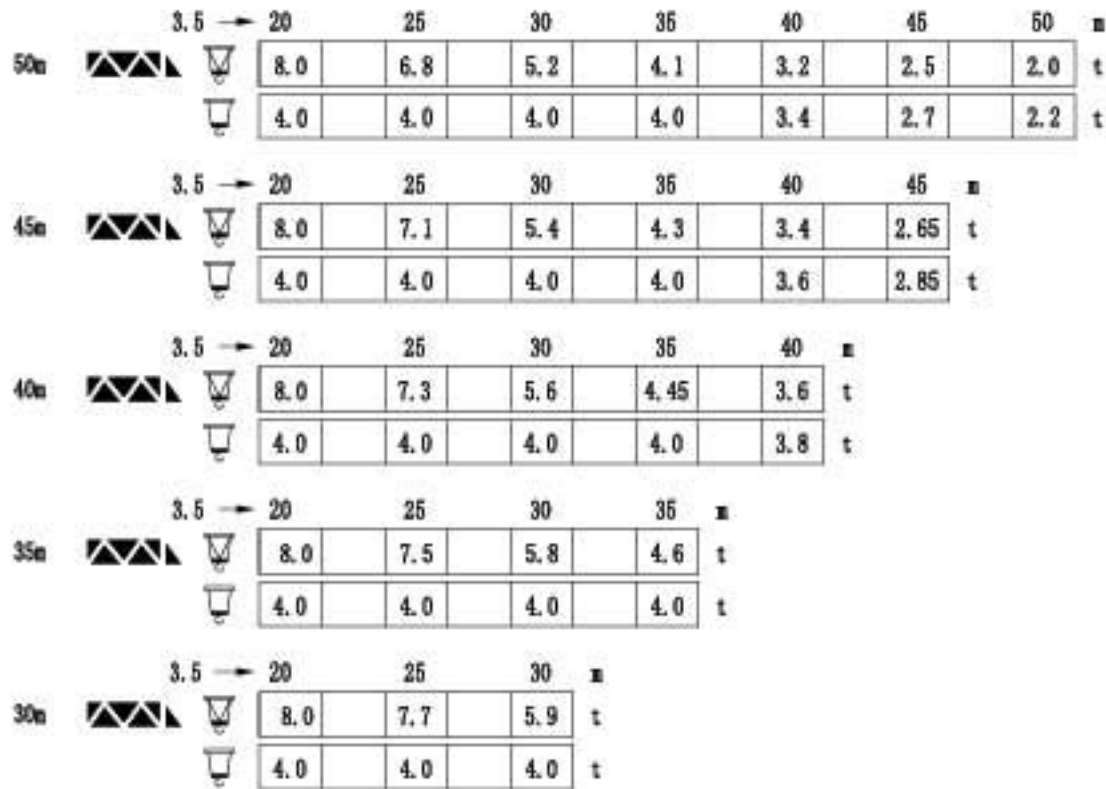


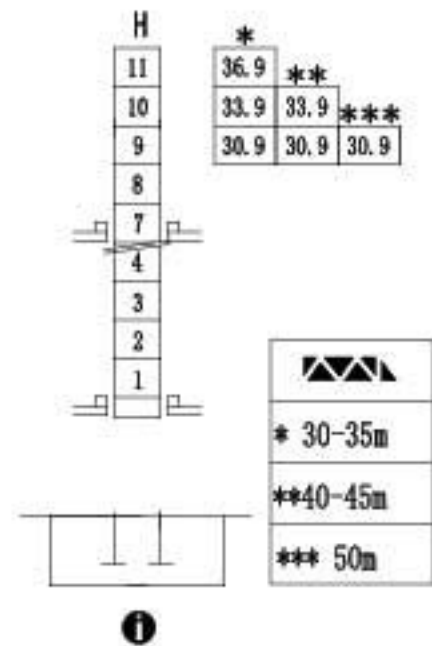
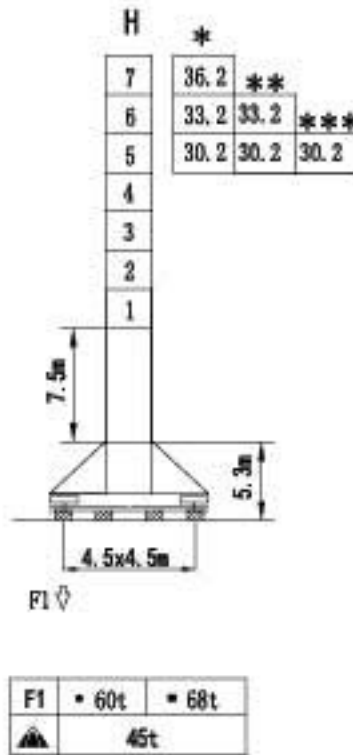
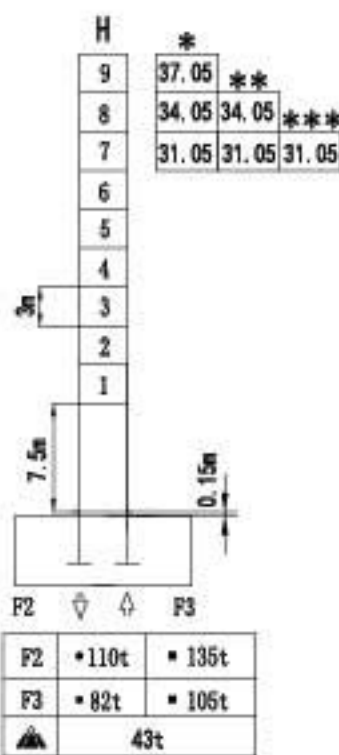
## 载荷特性 Load diagrams



(■) Weathervaning position 风向标位置

⊗ Jib hinge shaft 臂根铰点

## 塔身截面 Mast 1.6m×1.6m



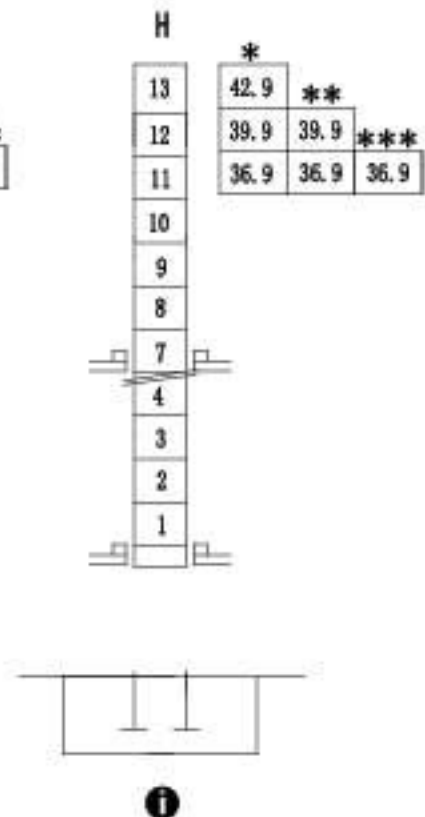
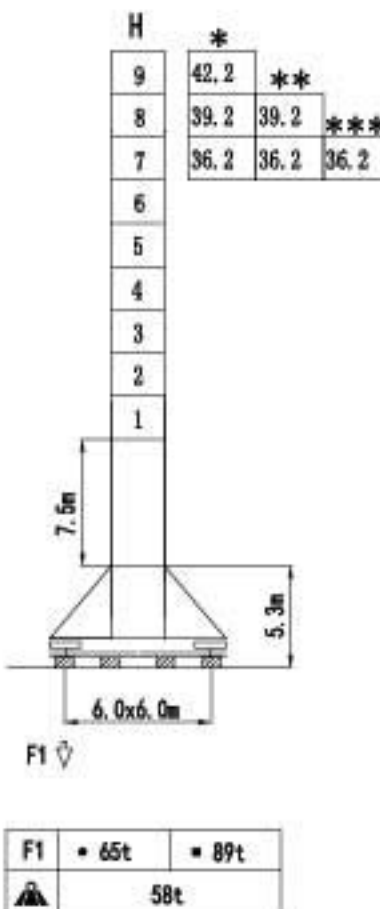
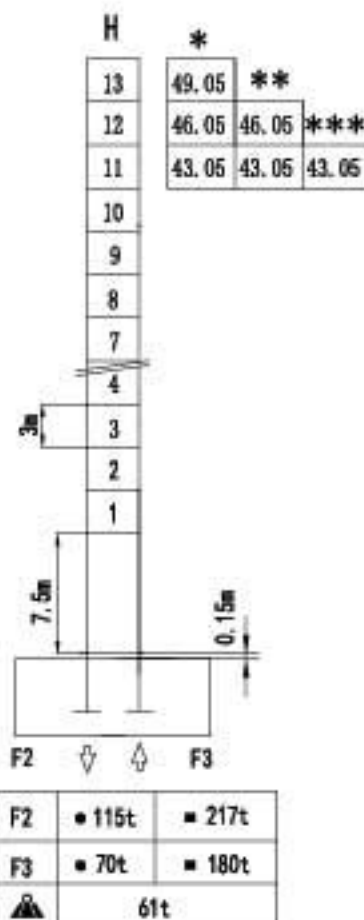
F 反力 Reactions

- 工作状态 in service
- 非工作状态 out of service

自重 Self-load

不带载荷及配重 Without load and ballast  
最大臂长及标准 With longest jib and  
高度时的自重 Free standing height

## 塔身截面 Mast 2m×2m



机构特性 Mechanisms specification		吊钩		吊钩		电机 (kw) Motor		
		m/min	t	m/min	t			
起升 Hoisting	▲ ● ▼	30L VF20 (40QP24HS-CG2)	0-40	4.0	0-20	8.0	500m	30
			0-80	2.0	0-40	4.0		
	40PC20	0-6.5	4.0	0-3.3	8.0	440m	30/30/5.5	
		0-35	4.0	0-17.5	8.0			
		0-70	2.0	0-40	4.0			
拉臂 Luffing	▲ ▼	30FVF35 (40LP35HZSS)	3min (15° -85°)			30		
回转 Slewing	●	RCV145	0.7rpm			145N.m×2		
行走 Travelling	IIIIII ●					①		
电源 Mains supply				380V/50HZ 440V/60HZ				
供电容量 Necessary electric power				100 KVA				

以上参数可按用户要求配置

执行标准 Voluntary Standards: GB/T13752

The related parameters could be configured according to clients requests

### ● 同我们协商 Consuitus

### 平衡臂配重 Counter-jib ballast

▲▲▲▲	□□□□□□	▲▲
30-45m	7.0m	15000kg
45-50m	7.0m	15500kg

### 运输 Shipping

序号 No.	塔身 Tower	高度(m) H(m)	集装箱数量 Container QTY			
			FR	40' GP	40' HQ	20' GP
1	1.6m固定式	34.05				
1	2m固定式	40.5				

#### Contract Information:

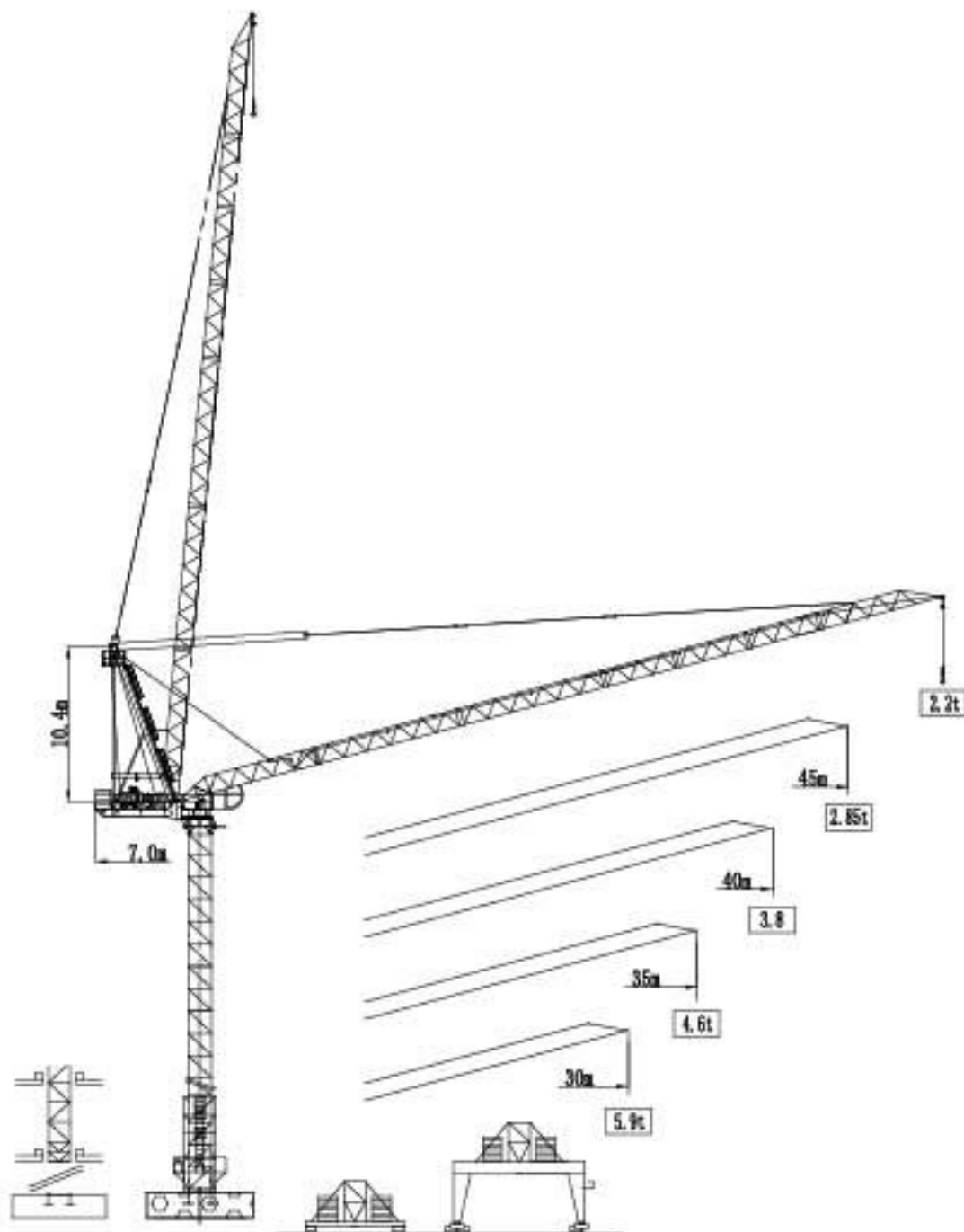
Tel:0086-24-88901098 Fax:0086-24-88095022  
 Email:info@cn-zcjj.com  
 Office Address:308 room,Fengjingruige building,  
 code 256,Dongbei damalu,Dadong District,Shenyang,  
 China  
 Post Code:110044  
 Factory Address:The north of Huanggu Industry,  
 Shenyang City,Liaoning Province,China.  
 Website: www.zcjjtowercrane.com

#### 沈阳正创建筑机械有限公司

#### 联系方式:

电话: 024-88901098  
 传真: 024-88095022  
 邮箱: info@cn-zcjj.com  
 地址: 沈阳市大东区东北大马路256号

动臂式起重机 Luffing Crane



通过 ISO 9001 国际质量体系认证  
Our products have been awarded of ISO9001