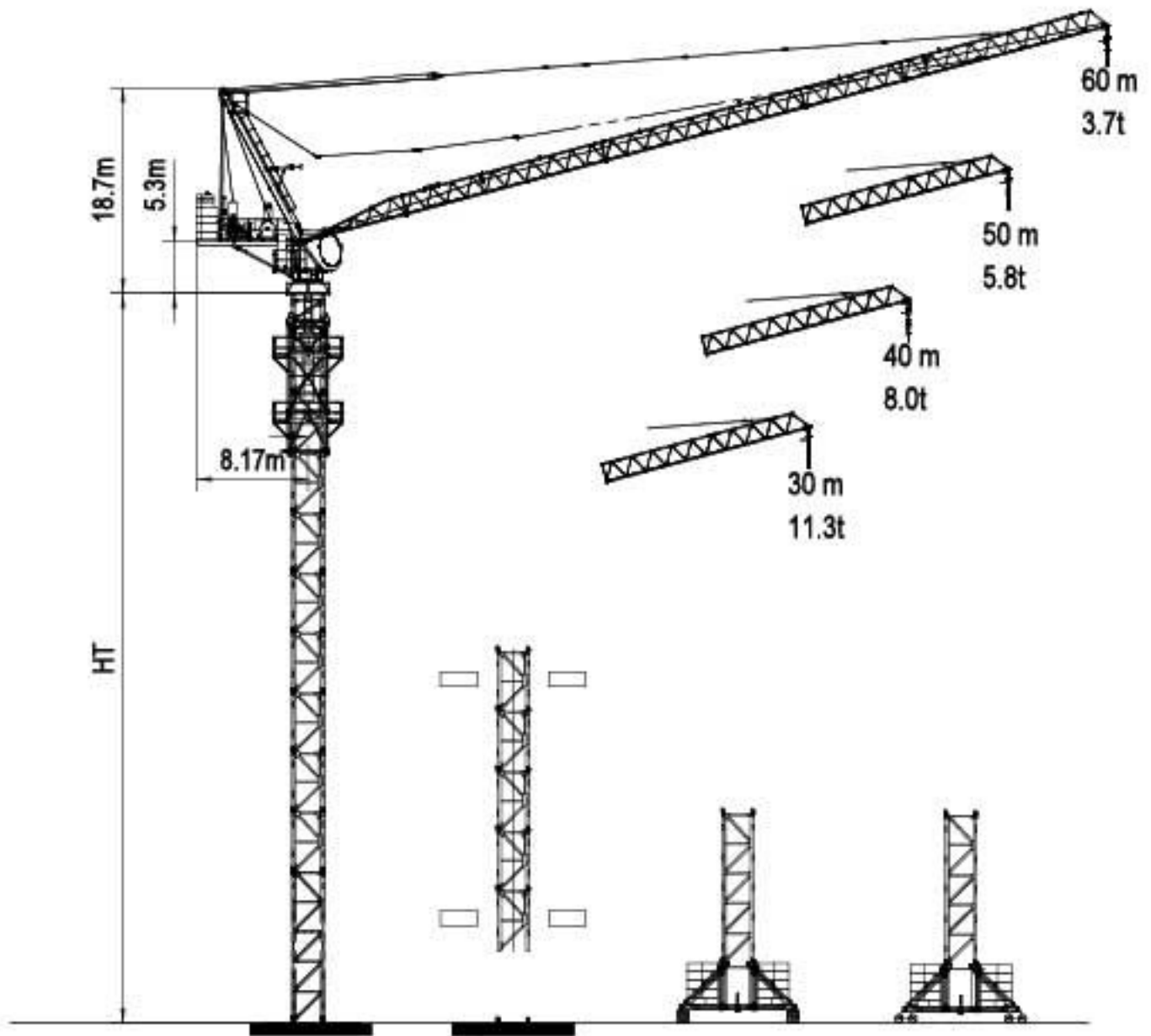
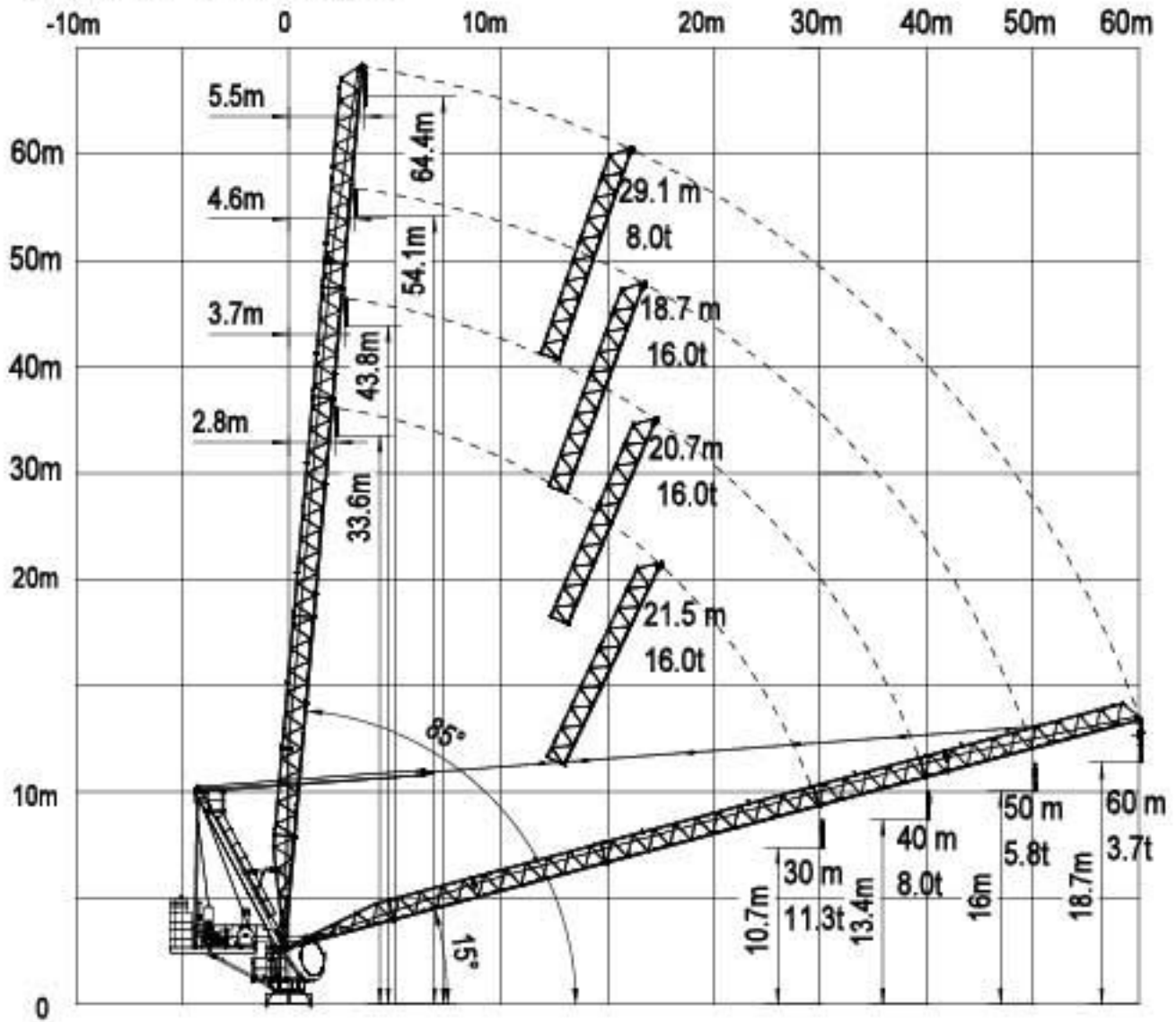


动臂式起重机 Luffing Crane



通过 ISO 9001 国际质量体系认证
Our products have been awarded of ISO9001

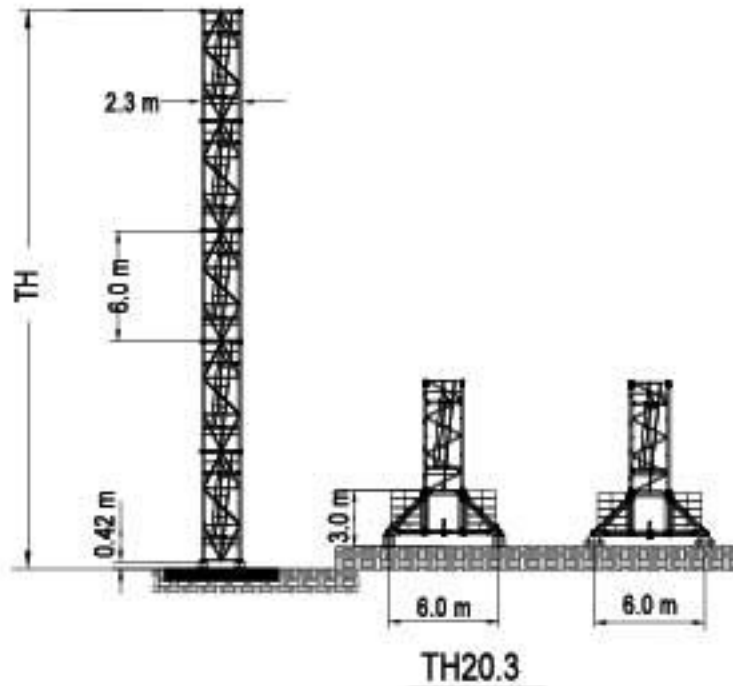
载荷特性 Load diagrams



起重性能 Load Capacity

Jib 起重臂	Max.load 最大起重量		Jib Reach 臂长									
	t	m	18	20	25	30	35	40	45	50	55	60
60m	8.00	29.1	8.00	8.00	8.00	7.75	6.58	5.72	5.05	4.51	4.08	3.70
	—	—	—	—	—	—	—	—	—	—	—	—
50m	8.00	36.9	8.00	8.00	8.00	8.00	8.00	7.34	6.48	5.80		
	16.00	18.7	16.00	14.87	11.78	9.72	8.24	7.14	6.28	5.60		
40m	8.00	40.0	8.00	8.00	8.00	8.00	8.00	8.00				
	16.00	20.7	16.00	16.00	13.15	10.86	9.22	8.00				
30m	8.00	30.0	8.00	8.00	8.00	8.00						
	16.00	21.5	16.00	16.00	13.68	11.30						

塔身 Tower

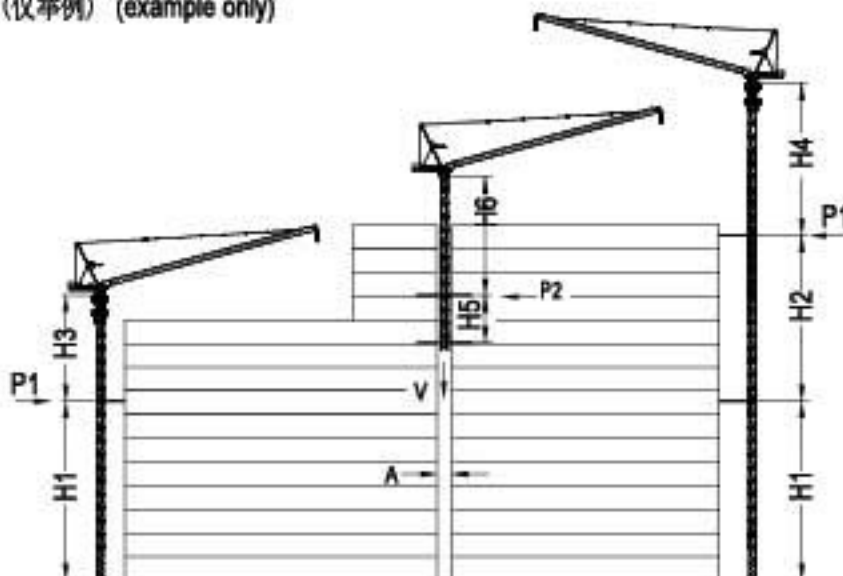


Tower configuration
塔身组成

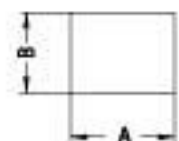
No. 序号	Tower 塔身	Base mast 1 基础节1	Adapter 过渡节	Mast 标节	HT (m) 高度 (m)	Jib reach (m) 臂长 (m)
1	TH20.3			7	42.2	50-60
2	TH20.3			8	48.2	30-40

爬升 Climbing

外附式 External
内爬式 Internal
(仅举例) (example only)



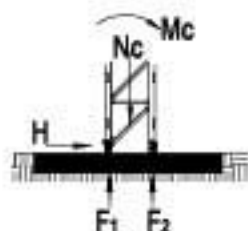
Tower 塔身	TH20.3		
	m	In service 工作状态 t	Out of service 非工作状态 t
H1	33.4	—	—
H2	30.4	—	—
H3	38.8	—	—
H4	32.8	—	—
H5	14.0	—	—
H6	28.0	—	—
P1	—	18.5	23.6
P2	—	20.8	25.3
V	—	105.2	89.2
A	2.6		
B	2.6		



机构性能 Mechanisms Specification

机构性能 Mechanisms Specification											KW
起升 Hoisting		75LVF40L	m / min t	82.0 4.0	66.0 5.0	41.0 8.0	41.0 8.0	33.0 10.0	21.0 16.0	600 m	75
变幅 Luffing		55FVF40	min	15°~85° t=2.10						55	
回转 Slewing		RZV95x2	r / min	0.67						95Nm ^{x2}	
行走 Travelling		6RTVF4	m / min	25						5.5x4	
电源 Power Supply				380V 50Hz / 440V 60Hz							
总功率 Necessary Electric Power				153 kVA							

基础 Foundation



Static Crane
固定式起重机

Tower 塔身	HT (m)	Jib reach (m) 臂长 (m)	Foundation loading 基础载荷			Corner forces 地脚反力	
			Mc (kN.m)	Nc (kN)	H (kN)	F ₁ (kN)	F ₂ (kN)
TH20.3	42.0	60	7660	1115	181.4	-2429	2987
TH20.3	48.0	40	7025	1140	179.0	-2199	2769

运输 Shipping

Tower 塔身	HT (m)	Container QTY 集装箱数量			
		FR	40'OP	40'HQ	20'GP
TH20.3	42.0			10	1

Contract Information:

Tel:0086-24-88901098 Fax:0086-24-88095022
 Email:info@cn-zcjj.com
 Office Address:308 room,Fengjingruige building,
 code 256,Dongbei damalu,Dadong District,Shenyang,
 China
 Post Code:110044
 Factory Address:The north of Huanggu Industry,
 Shenyang City,Liaoning Province,China.
 Website: www.zcjjtowercrane.com

沈阳正创建筑机械有限公司
 联系方式:

电话: 024-88901098
 传真: 024-88095022
 邮箱: info@cn-zcjj.com
 地址: 沈阳市大东区东北大马路256号