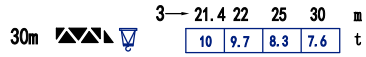
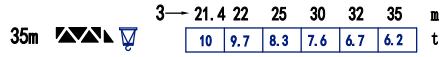
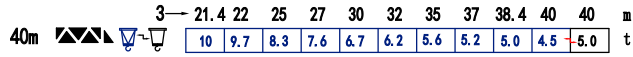
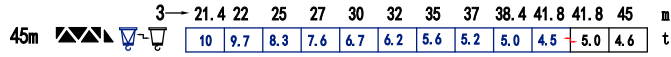
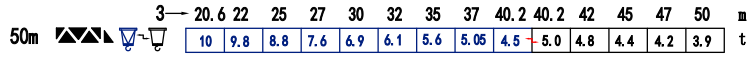
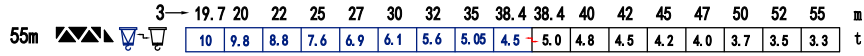
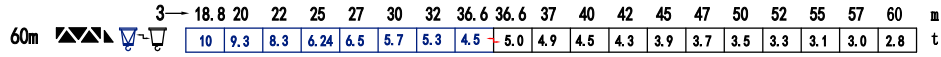
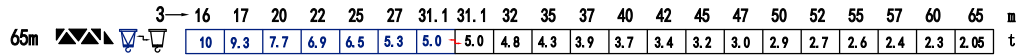
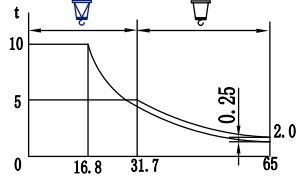


载荷特性 Load diagrams

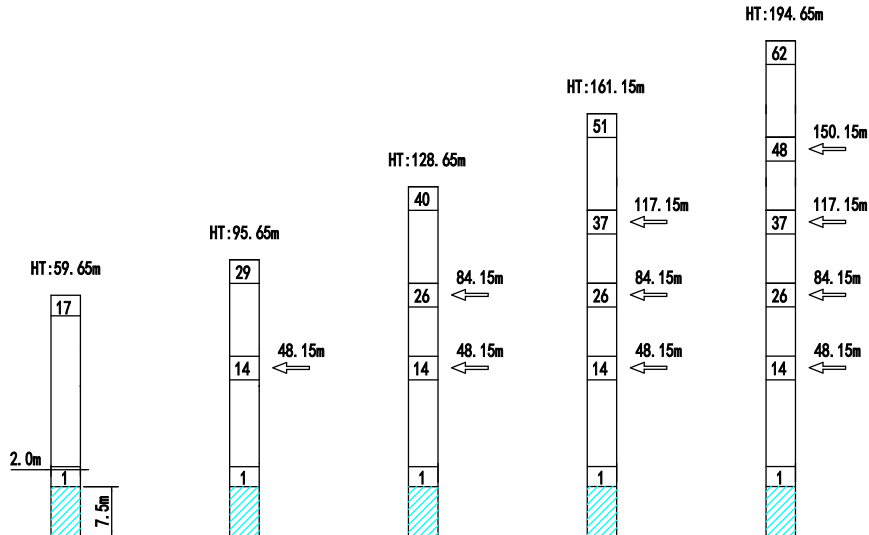


= - 0.25t



标准小车可使用2/4倍绳率。(使用四倍绳率时, 应从二倍率的载荷中减去0.25吨)
 Standard trolley 2/4 fall. (When using subtract 0.25t from the loads)

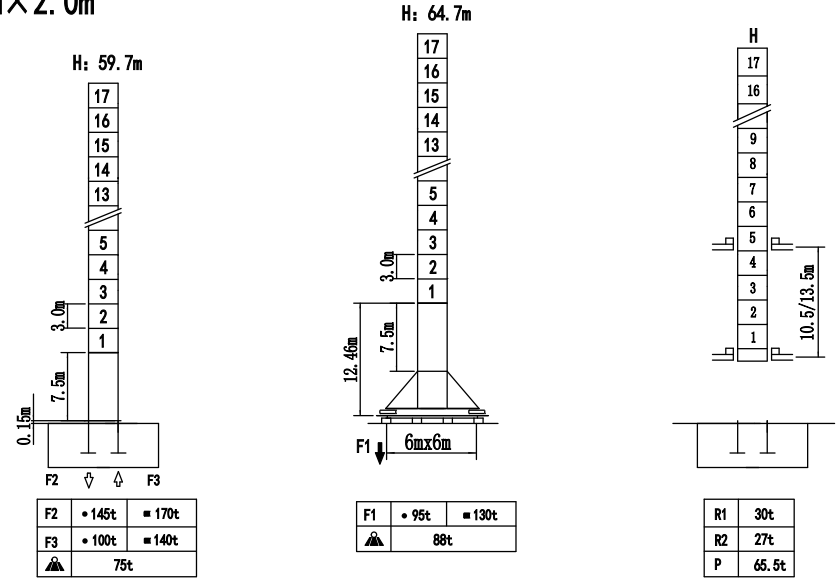
附着 Anchorages



塔身截面 Mast

2.0m×2.0m

TC6520-10



F 反力 Reactions	• 工作状态 in service	自重 不带载荷及配重 Without load and ballast	Without load and ballast
	■ 非工作状态 Out of service	自重 最大臂长及标准高度时的自重	With longest jib and Free standing height

爬升 Climbing crane

