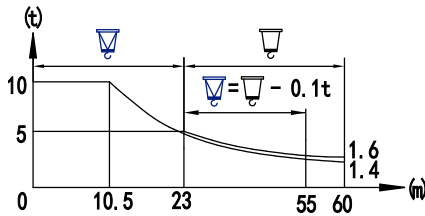
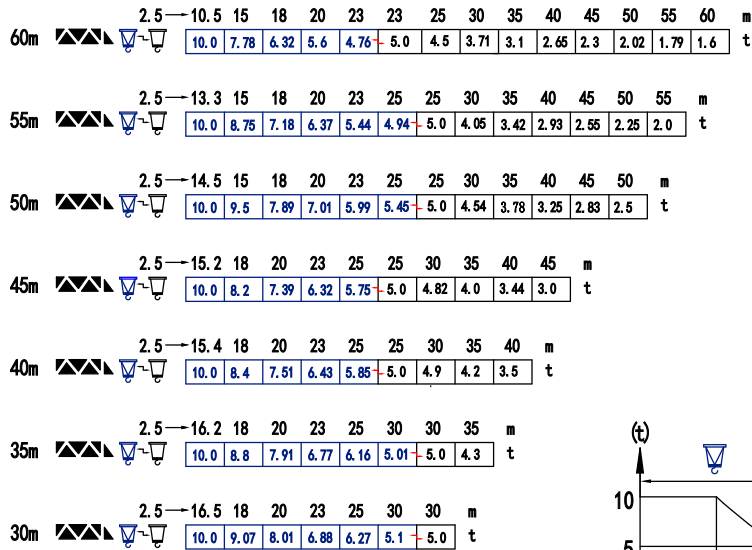


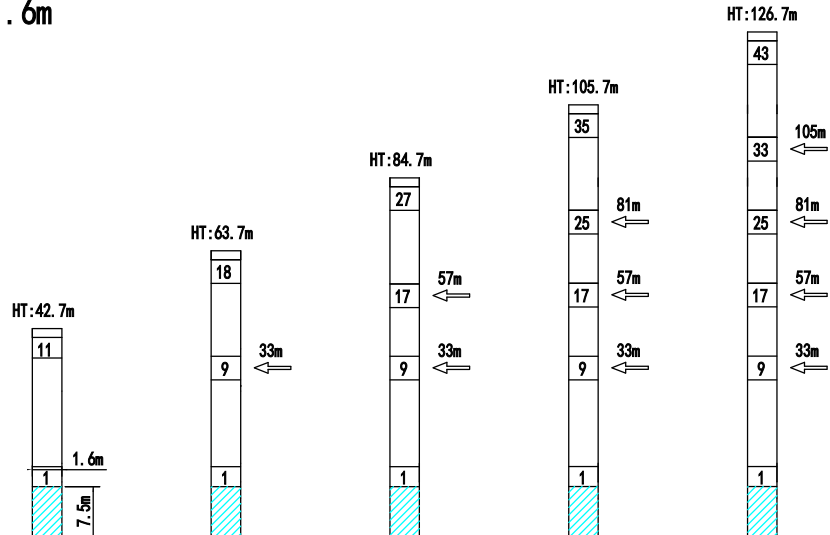
载荷特性 Load diagrams



标准小车可使用2/4倍绳率。(使用四倍绳率时, 应从二倍率的载荷中减去0.1吨)
 Standard trolley 2/4 fall. (When using 4x fall, subtract 0.1t from the loads)

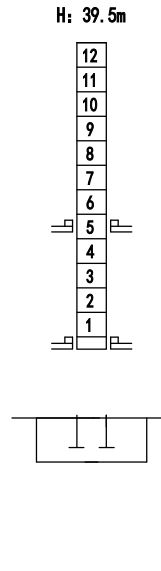
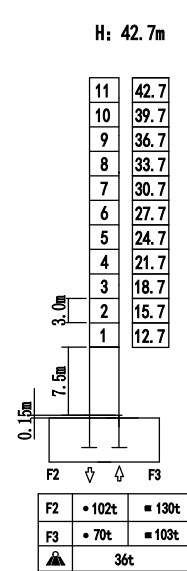
附着 Anchorages

1.6m x 1.6m

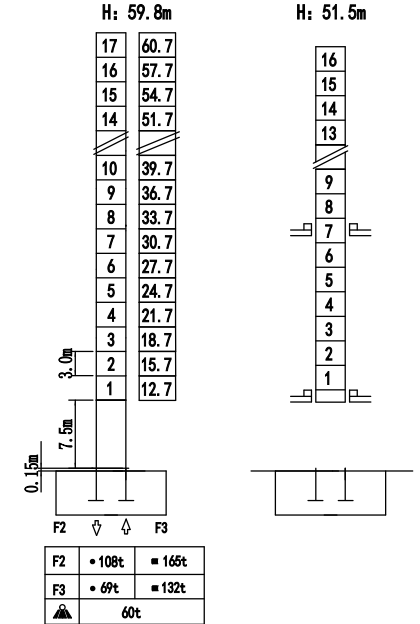


塔身截面 Mast

1.6m x 1.6m



2.0m x 2.0m



F 反力 Reactions
 • 工作状态 in service
 ■ 非工作状态 Out of service
 自重 Self-load
 不带载荷及配重 最大臂长及标准高度时的自重 Without load and ballast With longest jib and Free standing height

附着 Anchorages

2.0m x 2.0m

