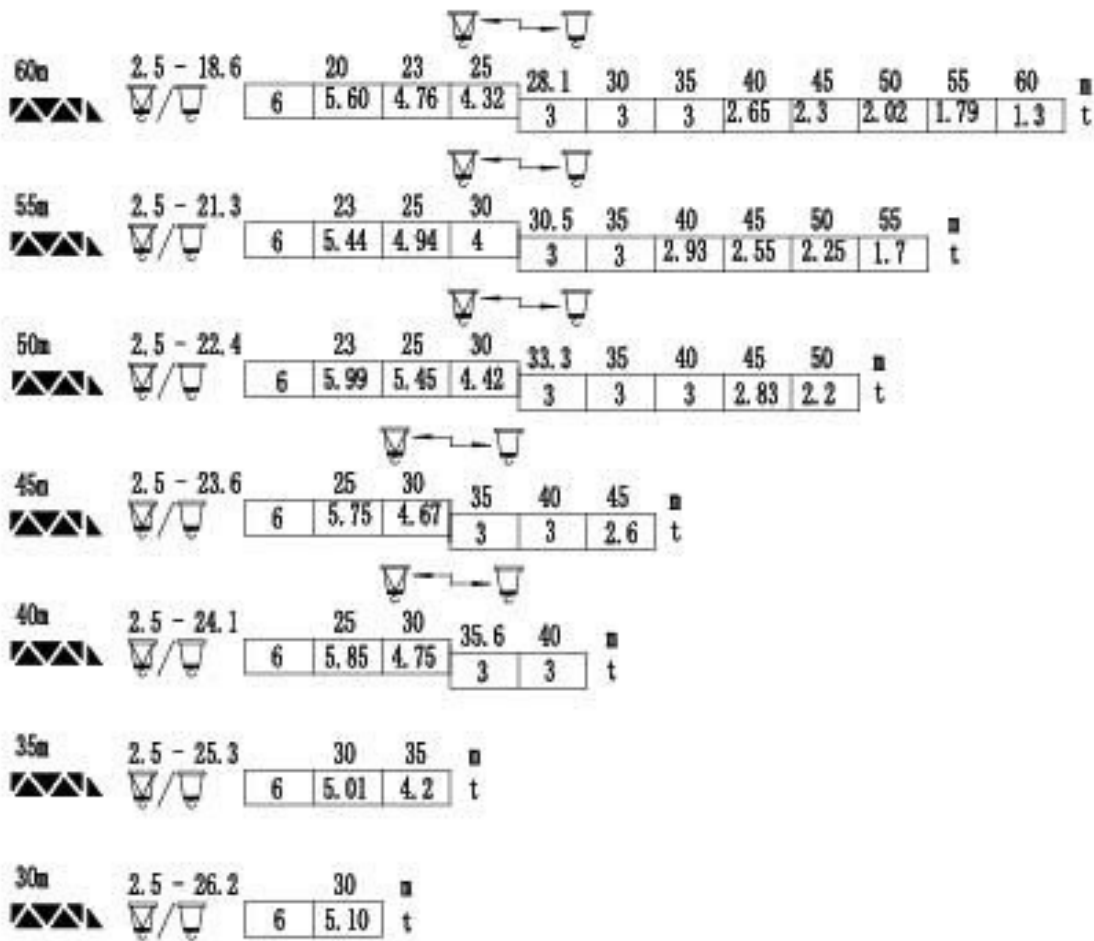


## 载荷特性 Load diagrams



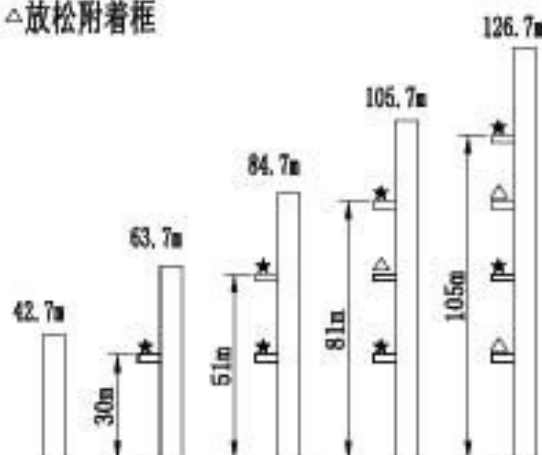
标准小车可使用2/4倍绳率。(使用四倍绳率时, 应从二倍率的载荷中减去0.1吨)  
Standard trolley 2/4 fall. (When using 4x fall, subtract 0.1t from the loads of 2x fall)

## Stationary anchorage height

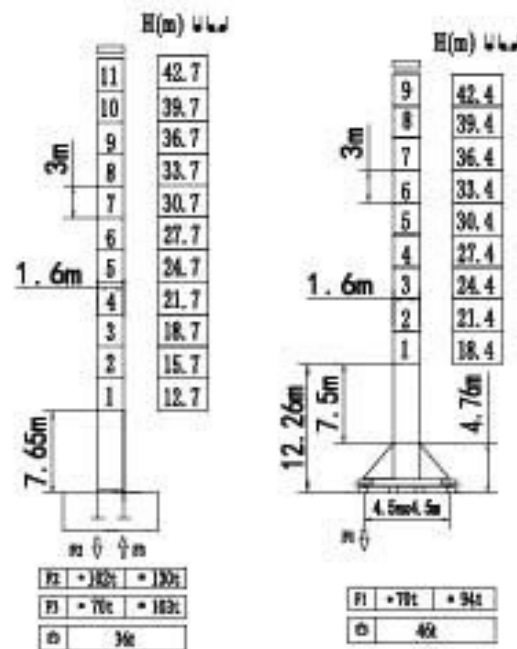
★ 紧固附着框

塔身截面 1.6m×1.6m

△ 放松附着框

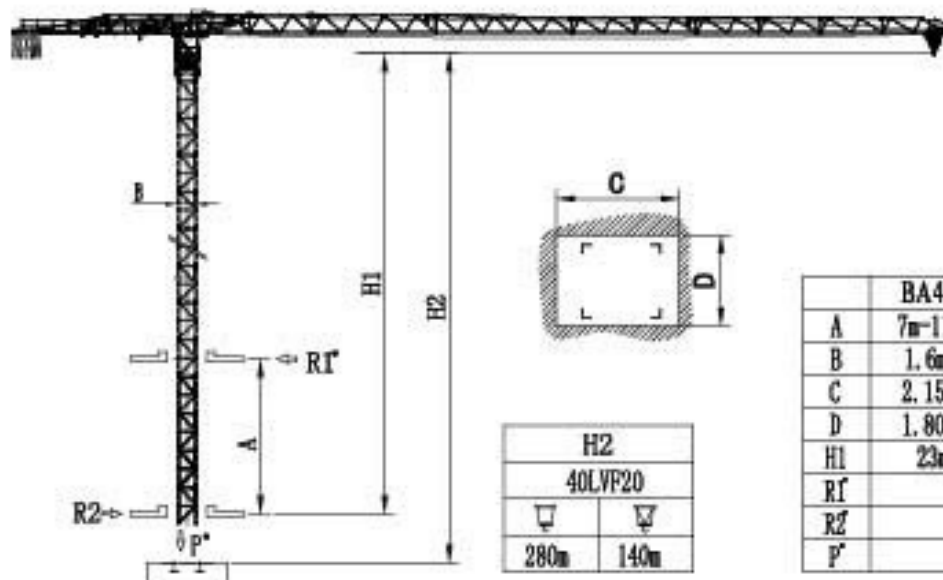


## 塔身截面 Mast 1.6mx1.6m



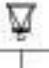







F 反力 Reactions	<ul style="list-style-type: none"> <li>工作状态 in service</li> <li>非工作状态 Out of service</li> </ul>	<ul style="list-style-type: none"> <li>自重 Self-load</li> </ul>	不带载荷及配重 Without load and ballast 最大臂长及标准高度时的自重 With longest jib and Free standing height
----------------	---	--	---

## 内爬塔机 Climbing crane



## 机构特性 Mechanisms specification




起升 Hoisting		33PC15						电机 (kw)
			m/min	t	m/min	t		
起升 Hoisting		33PC15	0-10	3.0	0-5.0	6.0	440m	24/24/5.5
			0-40	3.0	0-20	6.0		
			0-80	1.5	0-40	3.0		
变幅 Trolleying		4T3V4	7.5/28/57				95Nm	
		4DVF	0-57m/min				4	选择型 Optional winch
回转 Slewing		RCV95	0-0.7 rpm				2×95Nm	
		5.SSVF	0-0.7 rpm				2×5.5	选择型 Optional winch
行走 Travelling		4TVF	0-30 m/min				4×4	
电源 Mains supply					380V/50HZ 440V/60HZ			
供电容量 Necessary electric power					65 KVA			

以上参数可按用户要求配置

执行标准 Voluntary Standards: GB/T13752

The related parameters could be configured according to clients requests

### 塔机配重表 Crane ballast

		
60m	L=14.5m	15.8 t
55m	L=14.5m	13.0 t
50m	L=14.5m	13.0 t
45m	L=14.5m	12.4 t
40m	L=14.5m	10.8 t
35m	L=14.5m	9.2 t
30m	L=14.5m	7.8 t

### 运输 Shipping

塔身 Tower	高度 (m) HH(m)	集装箱数量 Container QTY			
		FR	40' OP	40' HQ	20' GP
L46A	42.7			5	1

### Contract Information:

Tel:0086-24-88901098 Fax:0086-24-88095022

Email:info@cn-zcjj.com

Office Address:308 room,Fengjingruige building,  
code 256,Dongbei damalu,Dadong District,Shenyang,  
China

Post Code:110044

Factory Address:The north of Huanggu Industry,  
Shenyang City,Liaoning Province,China.

Website: www.zcjjtowercrane.com

沈阳正创建筑机械有限公司

联系方式:

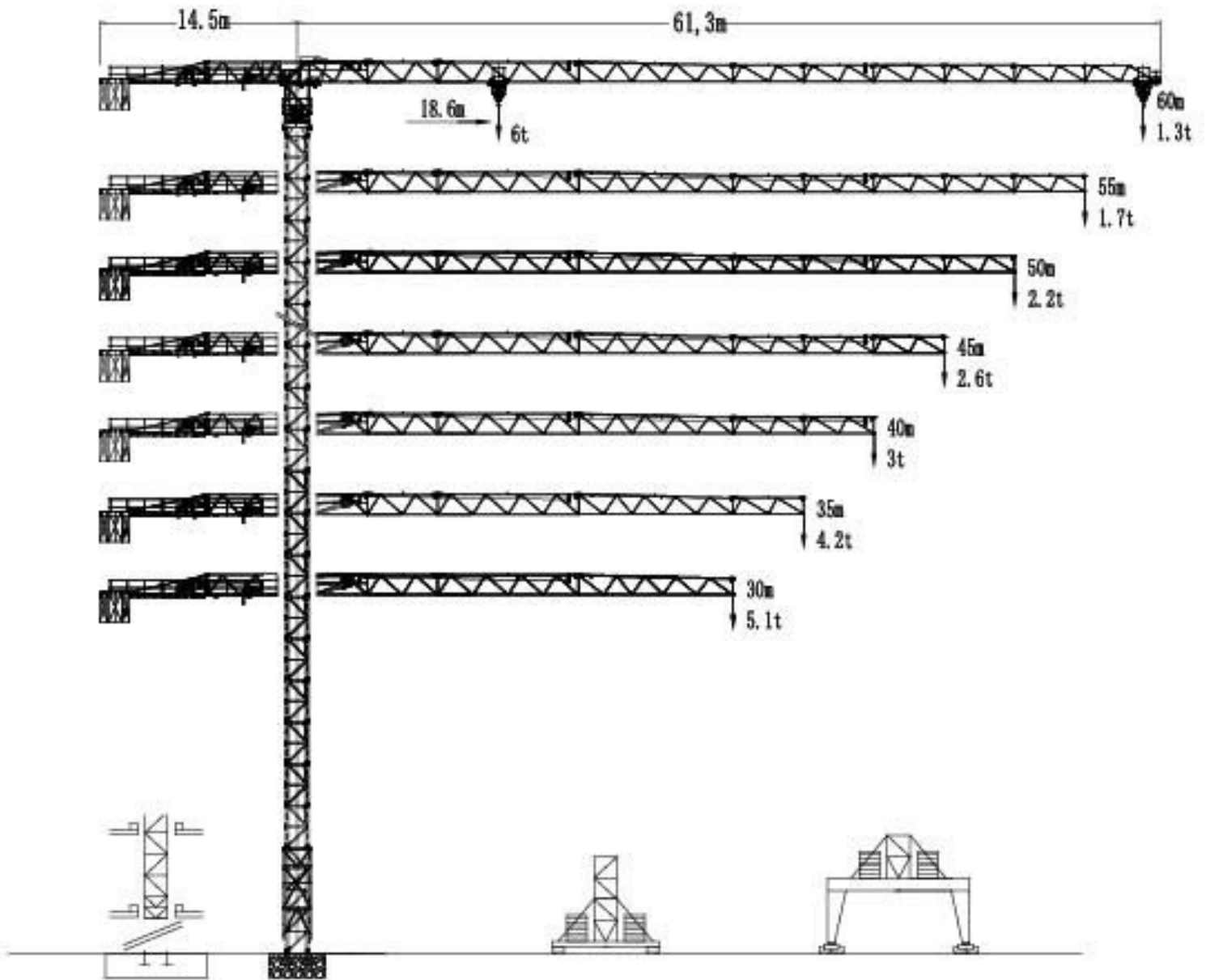
电话: 024-88901098

传真: 024-88095022

邮箱: info@cn-zcjj.com

地址: 沈阳市大东区东北大马路256号

TOWER CRANE



通过 ISO 9001 国际质量体系认证  
Our products have been awarded of ISO9001