

载荷特性 Load diagrams

▽ → □

70m	3.1 - 14	18	22	25	28.1	30	32	35	37	40	42	45	47	50	52	55	57	60	65	67	70	m
▽/□	16	11.9	9.38	8	8	7.16	6.66	6	5.63	5.14	4.86	4.47	4.25	3.95	3.66	3.52	3.37	3.03	2.86	2.75	2.6	t

▽ → □

65m	3.1 - 15	18	20	22	25	27.7	32	35	37	40	42	45	47	50	52	55	57	60	62	65	m
▽/□	16	12.7	11.8	10.9	9.5	8	8	7.5	6.8	6	5.5	5.3	4.85	4.6	4.45	4.2	4	3.8	3.65	3.4	t

▽ → □

60m	3.1 - 16.4	18	20	22	25	27	30	33	35	37	40	42	45	47	50	52	57	60	m
▽/□	16	12.8	12	11.3	10.4	9.3	8	8	7.6	7	6.4	6.1	5.7	5.5	5.05	4.85	4.41	4.1	t

▽ → □

55m	3.1 - 17.2	21	23	25	27	29	32	35.5	39	41	43	45	47	49	51	53	55	m
▽/□	16	12.9	12	10.9	10	9.23	8	8	7.49	7.1	6.76	6.44	6.18	5.88	5.65	5.42	5.2	t

▽ → □

50m	3.1 - 17.6	20	22	25	27	30	32	34	36	37	40	42	45	47	50	m
▽/□	16	14.1	12.7	10.4	9.8	8.95	8.4	8	8	7.7	7.34	6.98	6.7	6.1	5.8	t

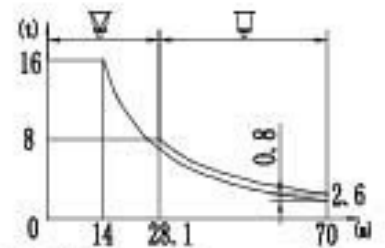
▽ → □

45m	3.1 - 18	20	22	25	27	30	32	35	37	40	42	45	m
▽/□	16	15.2	13.6	11.7	10.7	9.4	8.7	8	8	7.4	7	6.5	t

▽ → □

40m	3.1 - 18.4	20	22	25	27	30	32	38	40	m
▽/□	16	15.4	13.8	11.9	10.9	9.6	8	8	7.6	t

$$\nabla = \square - 0.8t$$

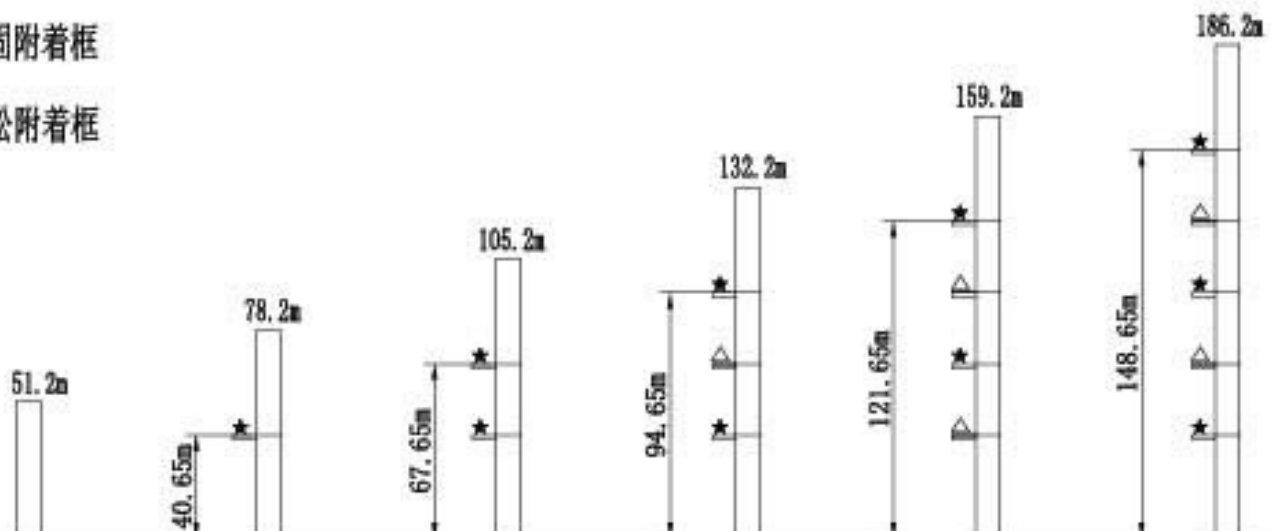


标准小车可使用2/4倍绳率。(使用四倍绳率时, 应从二倍率的载荷中减去0.8吨)
Standard trolley 2/4 fall. (When using subtract 0.8t from the loads)

固定式附着高度 Stationary anchorage height 塔身截面 2m×2m

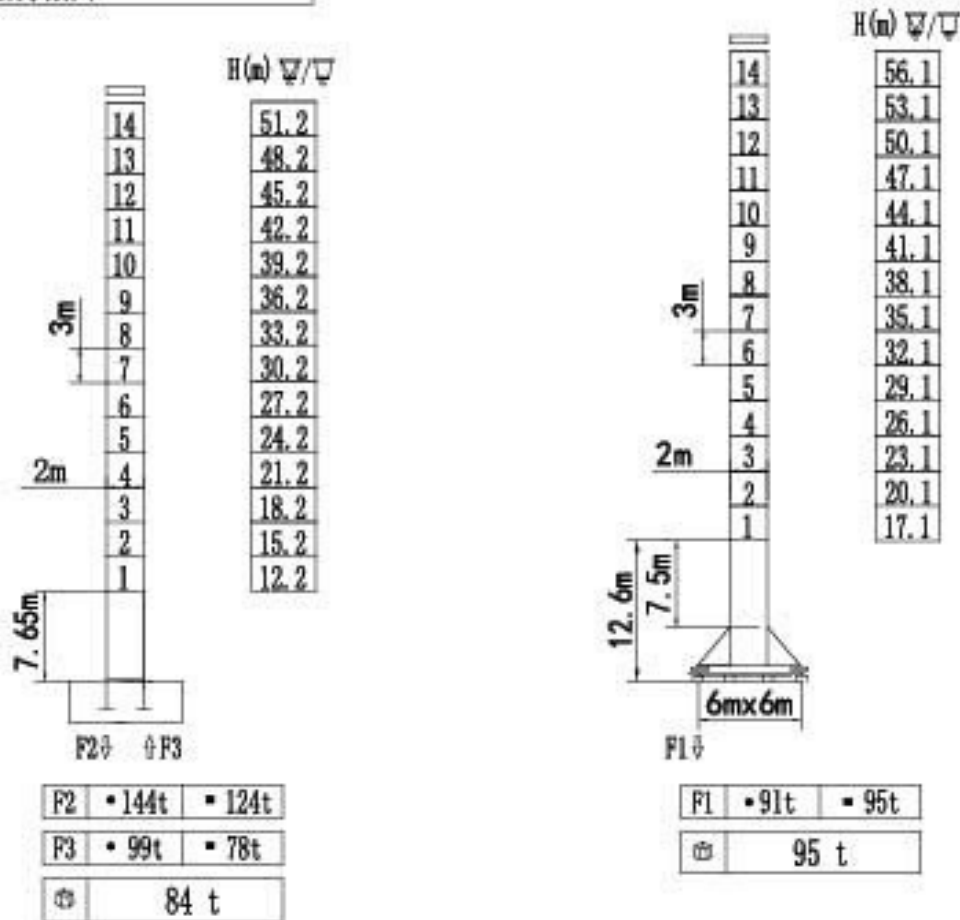
★ 紧固附着框

△ 放松附着框



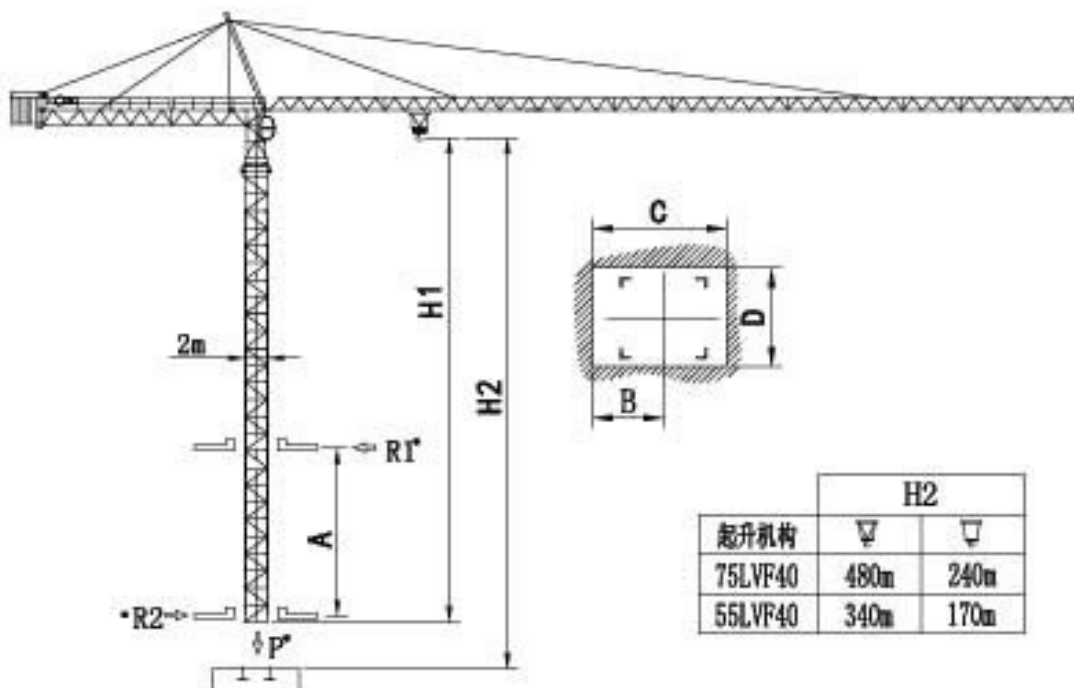
塔身截面 Mast 2mx2m

70m







F 反力 Reactions	• 工作状态 in service	⊕ 自重 Seif-load	不带载荷及配重 Without load and ballast
	▪ 非工作状态 Out of service		最大臂长及标准高度时的自重 With longest jib and Free standing height

内爬塔机 Climbing crane



	H2	
起升机构	▽	▽
75LVF40	480m	240m
55LVF40	340m	170m

	2m
A	12m-19m
B	1.495m
C	2.58m
D	2.17m
H1	45.6m
R1	31.5t-19.9t
R2	28t-16.4t
P	102t




机构特性 Mechanisms specification									电机 (kw)		
起升 Hoisting		75LVF40	m/min	82.0	69.0	46.0	41.0	34.5	23.0	500m	75
			t	3.5	5.0	8.0	7.0	10.0	16.0		
变幅 Trollying		7.5TVF	m/min	0-60						7.5	
回转 Slewing		RCV145	r/min	0-0.8						145Nm x 2	
		9SVF	r/min	0-0.8						9x2	
行走 Travelling		5.5TRVF	m/min	0-15						5.5x4	
电源 Mains supply				380V/50HZ 440V/60HZ							
KVA 供电容量 Necessary electric power				150 KVA							

以上参数可按用户要求配置

执行标准 Voluntary Standards: GB/T13752

The related parameters could be configured according to clients requests

塔机配重表 Crane ballast

		 (t)
70m	L=21.2m	17.7
65m	L=21.2m	16.8
60m	L=21.2m	16.1
55m	L=21.2m	14.2
50m	L=21.2m	13.2
45m	L=21.2m	9.9
40m	L=21.2m	7.2

运输 Shipping

塔身 Tower	高度(m) HH(m)	集装箱数量 Container QTY			
		FR	40' OP	40' HQ	20' GP
L68B1	51.2				

Contract Information:

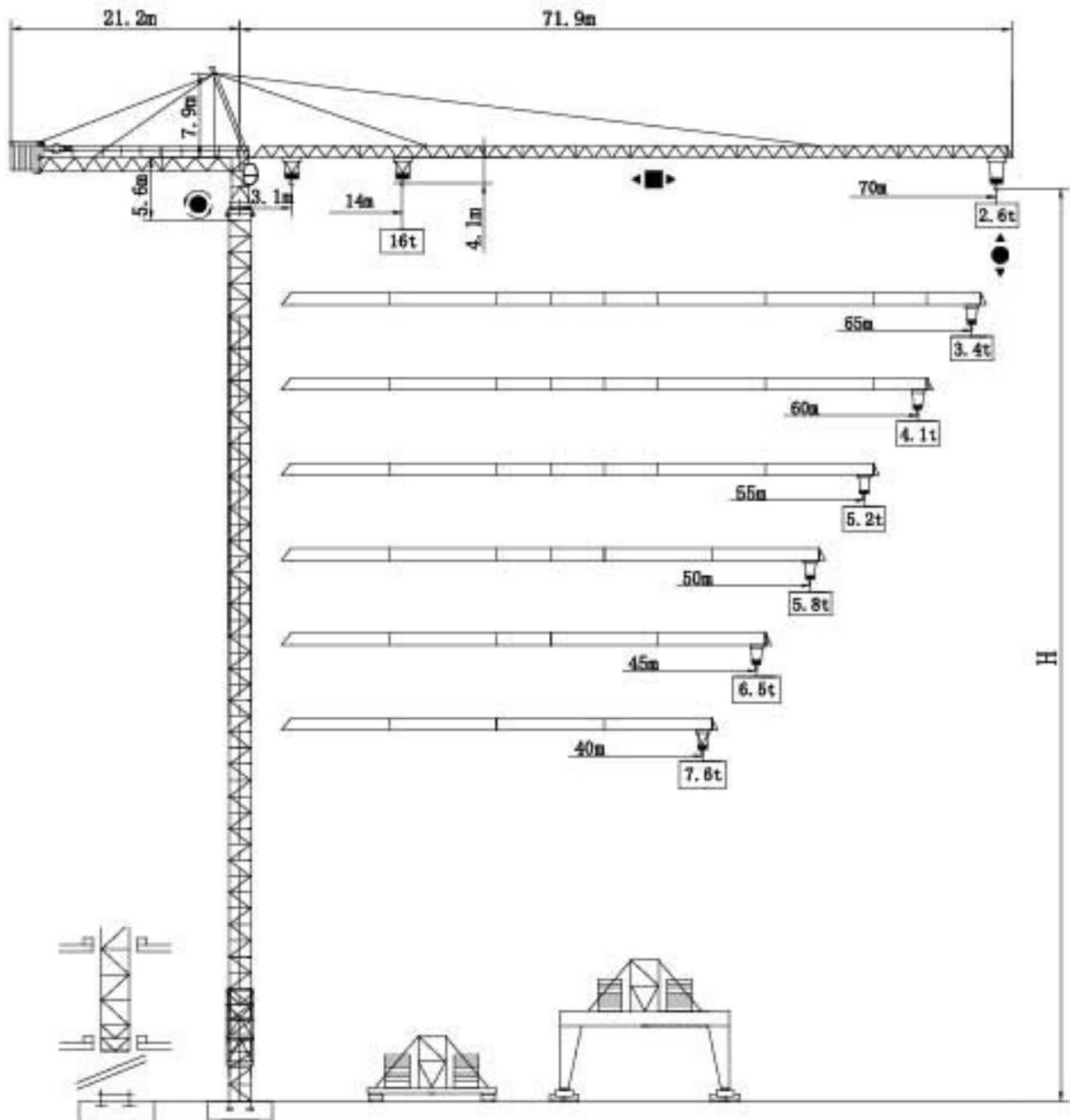
Tel: 0086-24-88901098 Fax: 0086-24-88095022
 Email: info@cn-zcjj.com
 Office Address: 308 room, Fengjingruige building,
 code 256, Dongbei damalu, Dadong District, Shenyang,
 China
 Post Code: 110044
 Factory Address: The north of Huanggu Industry,
 Shenyang City, Liaoning Province, China.
 Website: www.zcjjtowercrane.com

沈阳正创建筑机械有限公司

联系方式:

电话: 024-88901098
 传真: 024-88095022
 邮箱: info@cn-zcjj.com
 地址: 沈阳市大东区东北大马路256号

TOWER CRANE



通过 ISO 9001 国际质量体系认证
Our products have been awarded of ISO9001