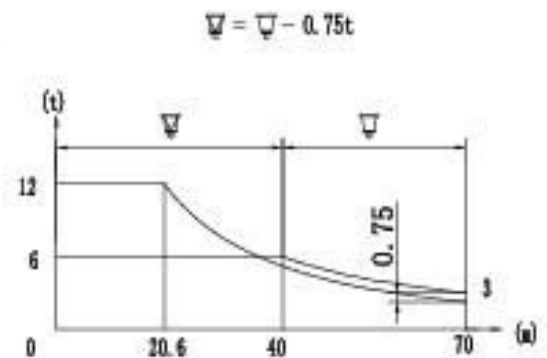
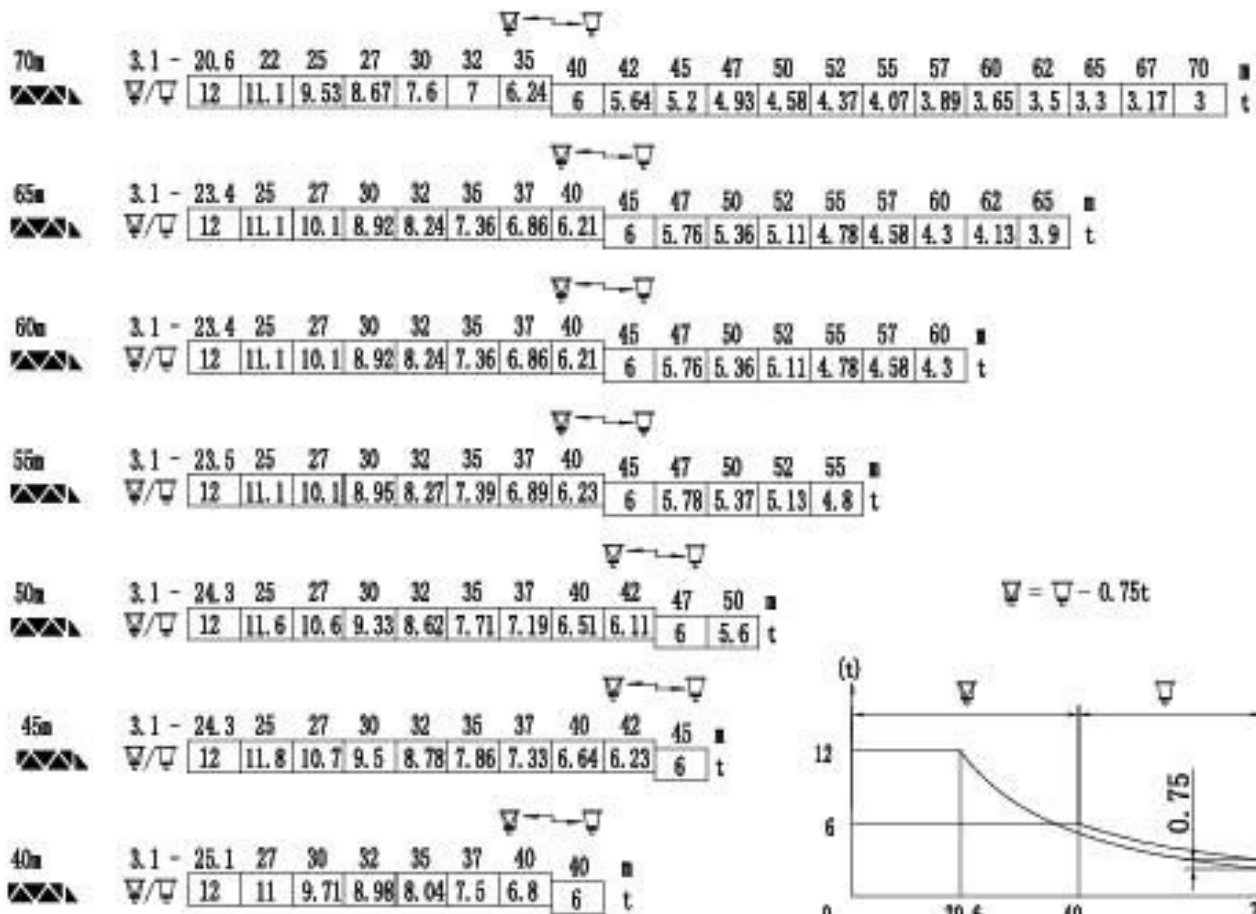


载荷特性 Load diagrams



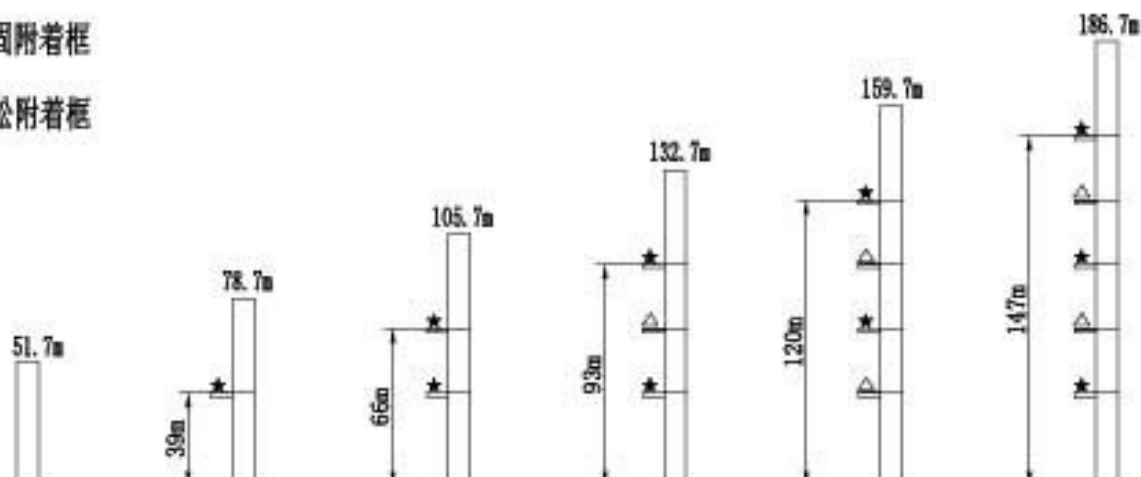
标准小车可使用2/4倍绳率。(使用四倍绳率时, 应从二倍率的载荷中减去0.75吨)
 Standard trolley 2/4 fall. (When using ∇ subtract 0.75t from the loads ∇)

固定式附着高度 Stationary anchorage height

塔身截面 2m×2m

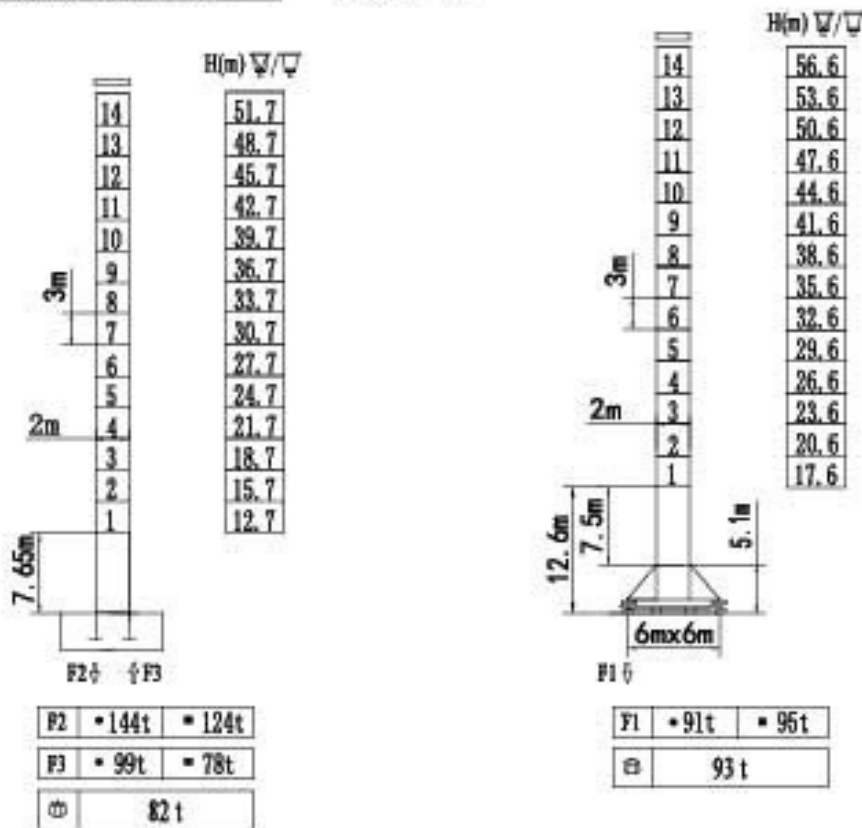
★ 紧固附着框

△ 放松附着框



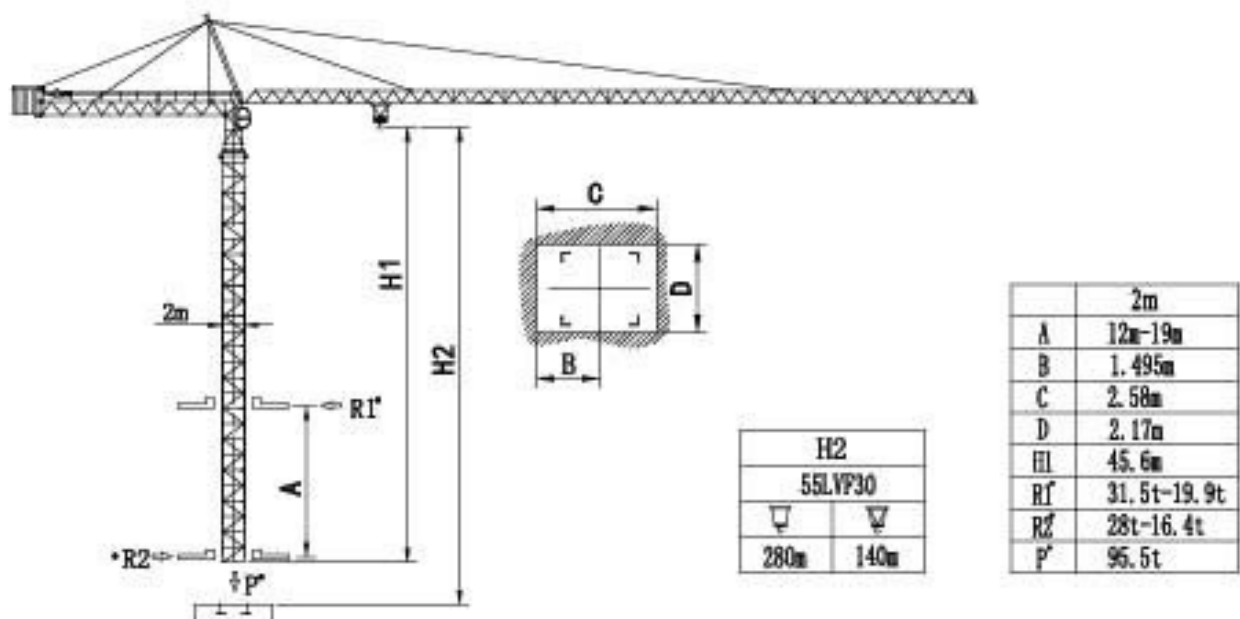
塔身截面 Mast 2mx2m

70m

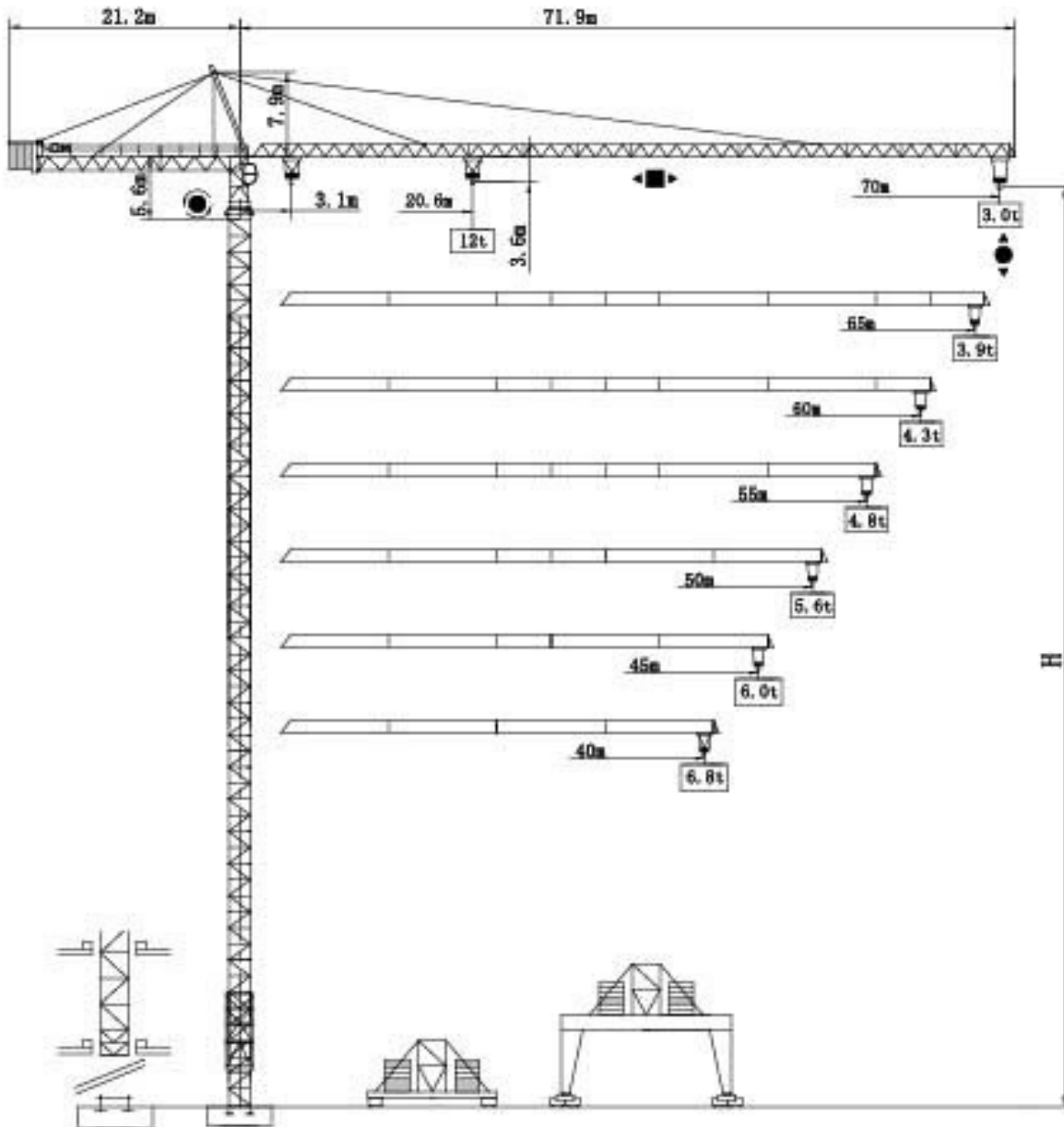


F 反力 Reactions	• 工作状态 in service	⊕ 自重 Self-load	不带载荷及配重 Without load and ballast
	▪ 非工作状态 Out of service		最大臂长及标准高度时的自重 With longest jib and Free standing height









内爬塔机 Climbing crane



TOWER CRANE



通过ISO9001国际质量体系认证
Our products have been awarded of ISO9001

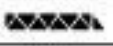


机构特性 Mechanisms specification								电机 (kw) Motor
			m/min	t	m/min	t		
起升 Hoisting		55LVF30	0-45	6.0	0-22.5	12.0	420m	55
			0-90	3.0	0-45	6.0		
变幅 Trolleying		XL120	0-65m/min					5.5
回转 Slewing		RCV145	0.8rpm					145N.m×2
行走 Travelling								
电源 Mains supply					380V/50HZ 440V/60HZ			
供电容量 Necessary electric power					120 KVA			

以上参数可按用户要求配置

执行标准 Voluntary Standards: GB/T13752

The related parameters could be configured according to clients requests

塔机配重表 Crane ballast

		 (t)
70m	L=21.2m	19.1
65m	L=21.2m	18.2
60m	L=21.2m	16.4
55m	L=21.2m	15.1
50m	L=21.2m	13.8
45m	L=21.2m	11.2
40m	L=21.2m	8.9

运输 Shipping

塔身 Tower	高度 (m) HH(m)	集装箱数量 Container QTY			
		FR	40' CP	40' HQ	20' GP
L68B2	51.7				

Contract Information:

Tel: 0086-24-88901098 Fax: 0086-24-88095022

Email: info@cn-zcjj.com

Office Address: 308 room, Fengjingruige building, code 256, Dongbei damalu, Dadong District, Shenyang, China

Post Code: 110044

Factory Address: The north of Huanggu Industry, Shenyang City, Liaoning Province, China.

Website: www.zcjjtowercrane.com

沈阳正创建筑机械有限公司

联系方式:

电话: 024-88901098

传真: 024-88095022

邮箱: info@cn-zcjj.com

地址: 沈阳市大东区东北大马路256号